

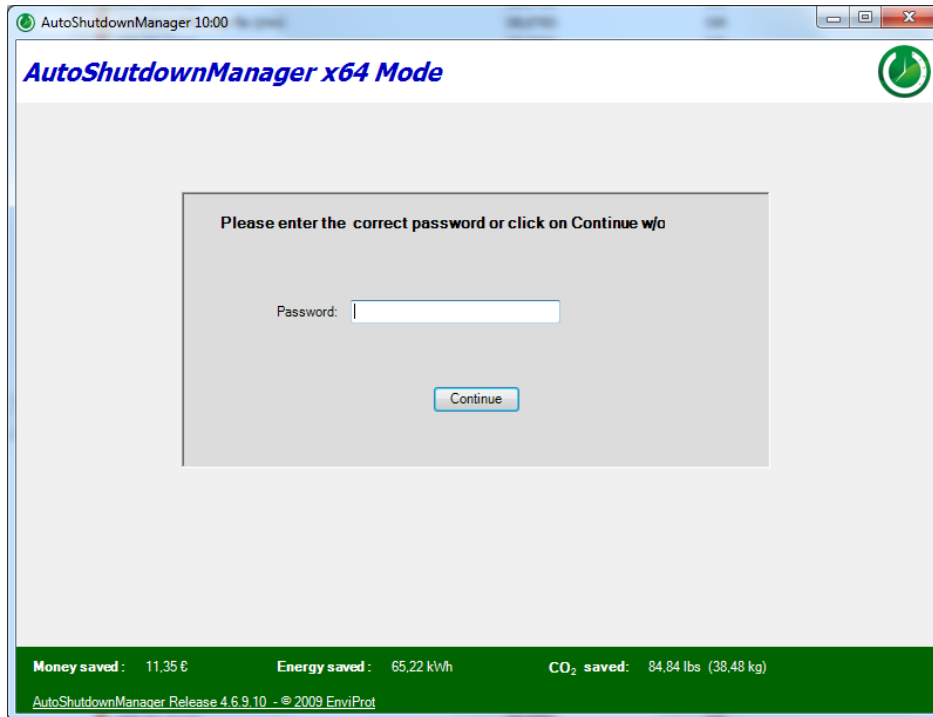
Install ASDM License Key

This tutorial will show you how to enter a multi-seat license key.

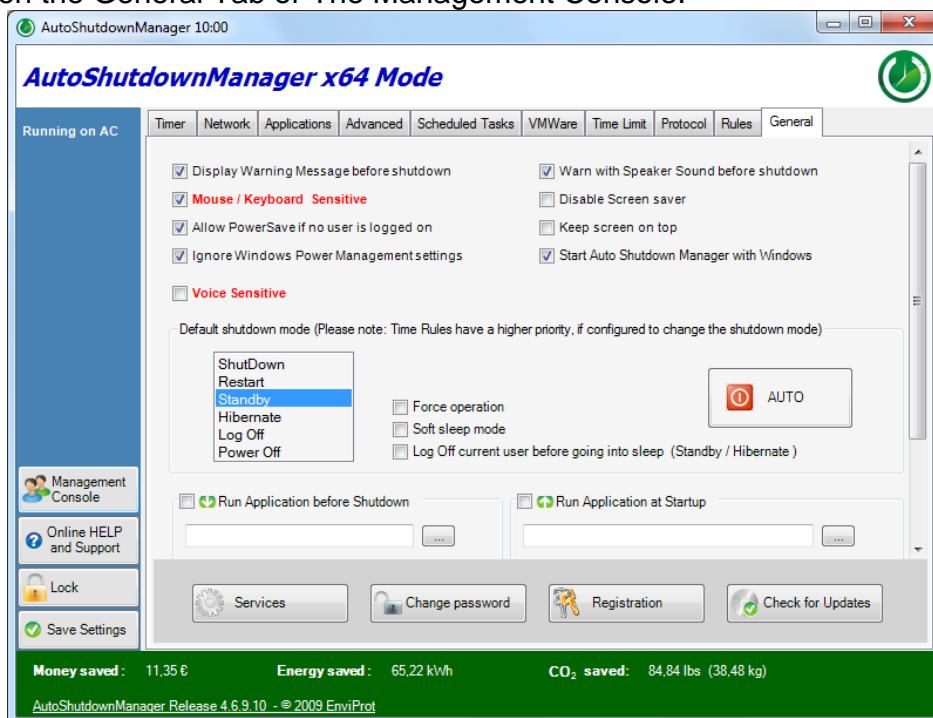
1.	Installing the license key	2
1.1	Using the General Tab.....	3
1.2	Enter License key in the Management Console	4

1. Installing the license key

On the machine and ASDM Instance that is going to serve as the ASDM Server, open Auto Shutdown Manager and click continue.

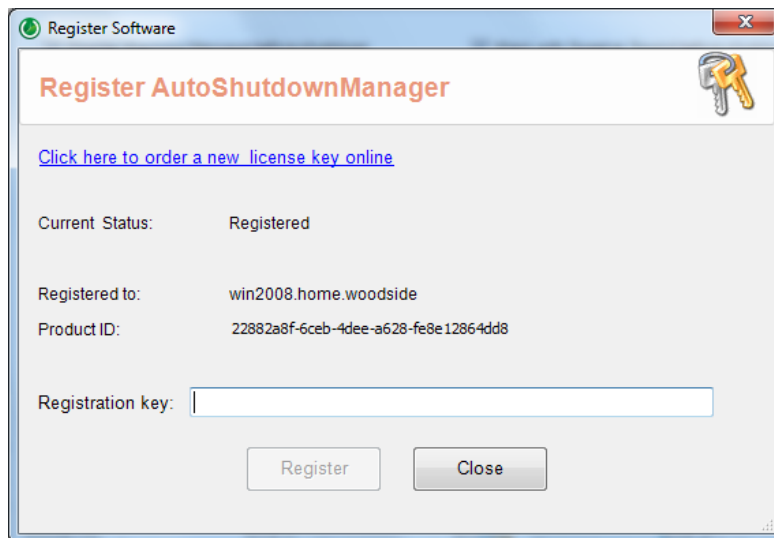


Either Open the General Tab or The Management Console.

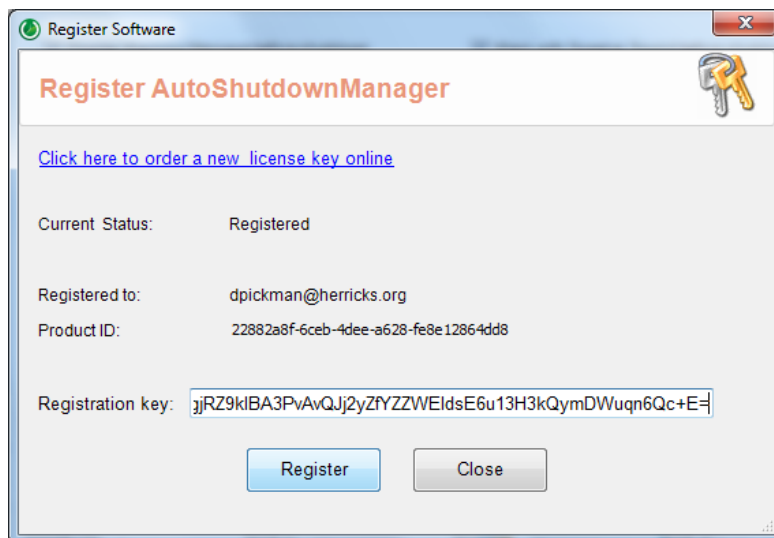


1.1 Using the General Tab

Click on Registration in the General Tab.



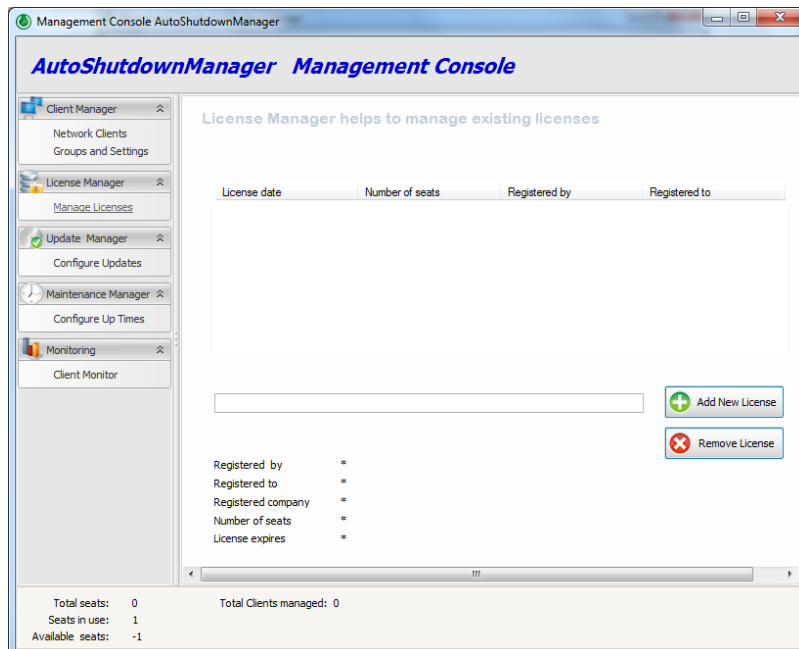
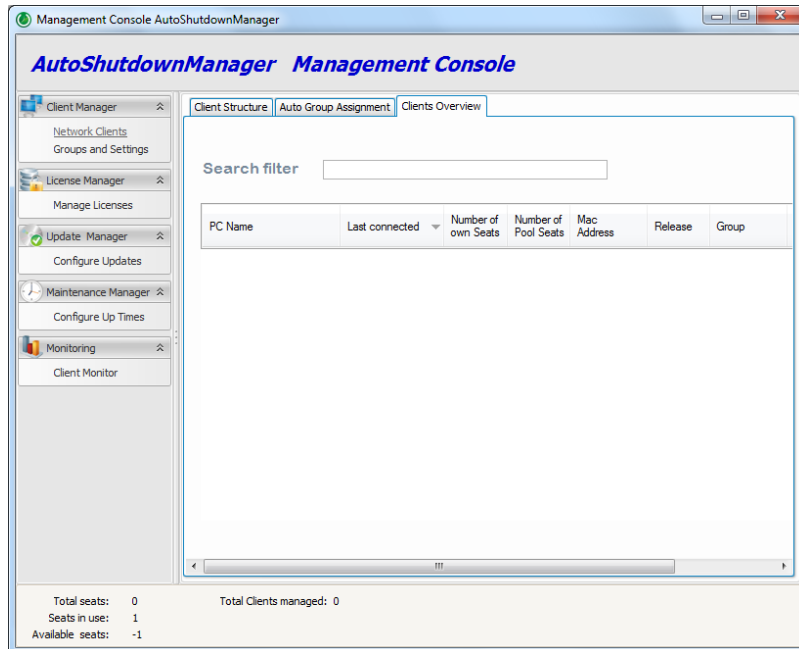
Copy & paste your license key.



Hit Register.

1.2 Enter License key in the Management Console

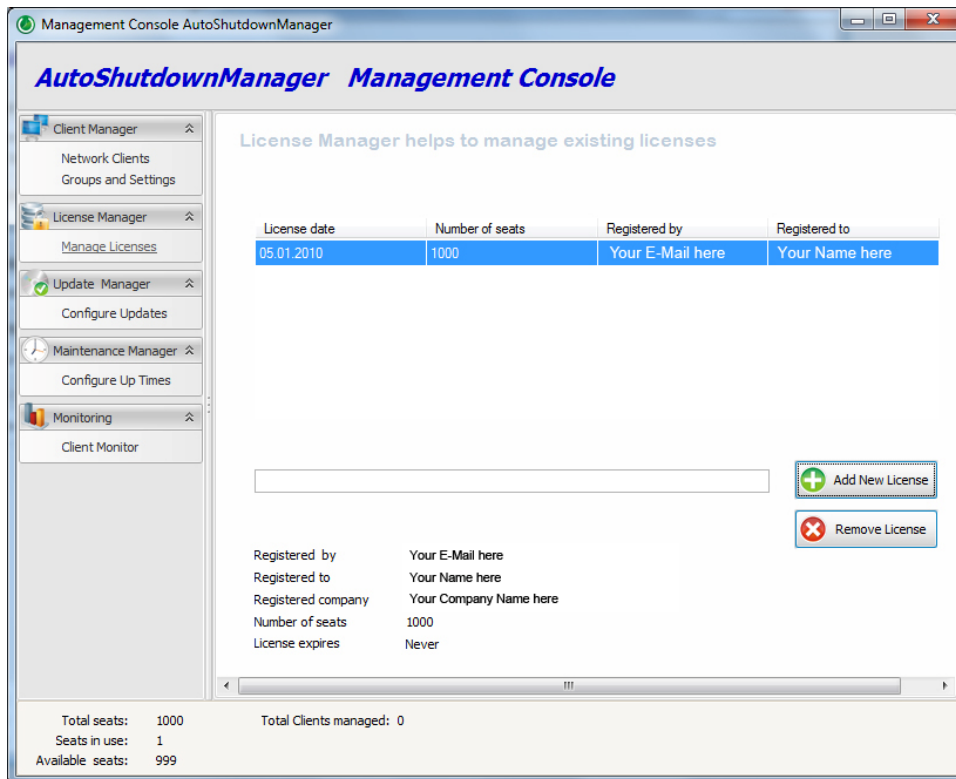
Open the Management Console and click on Manage Licenses.



Deploy Auto Shutdown Manager via GPO



Copy & paste your license key and click Add New License.



Done.

If you have any questions or suggestions, please feel free to contact us at <http://www.pcpowersaving.com/index-4.shtml>